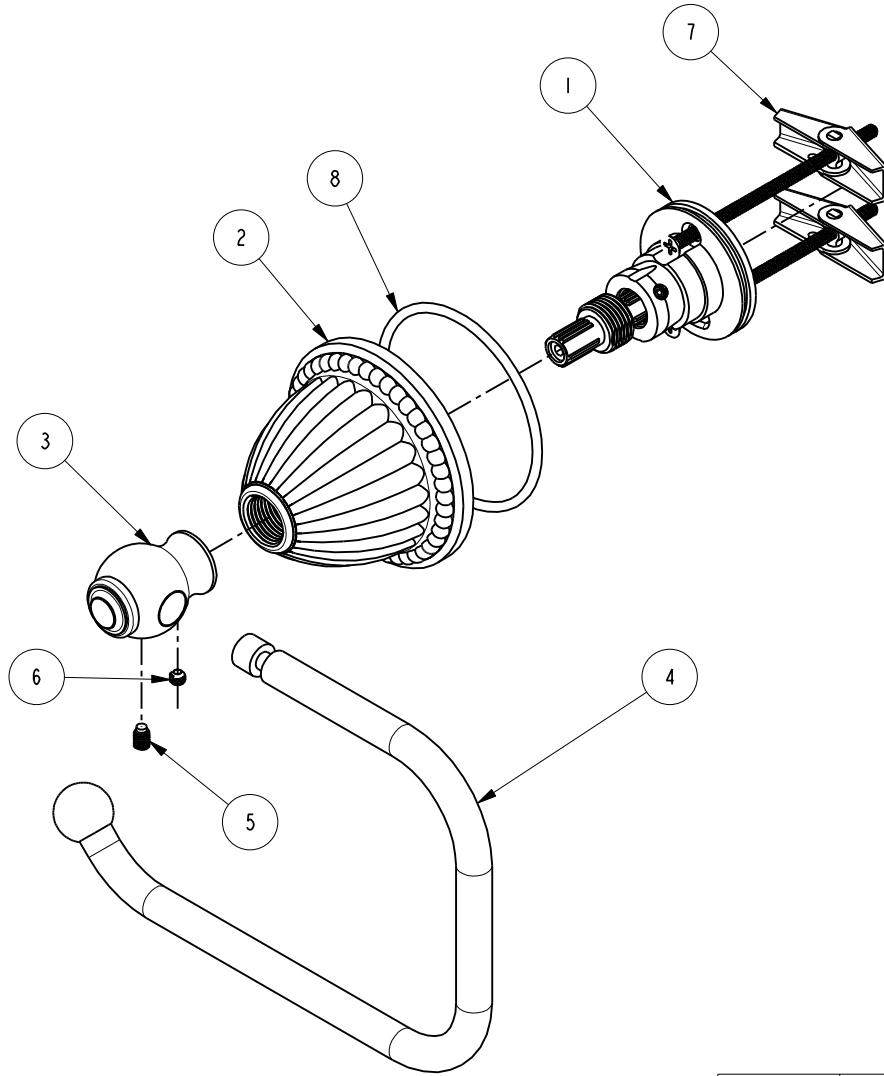


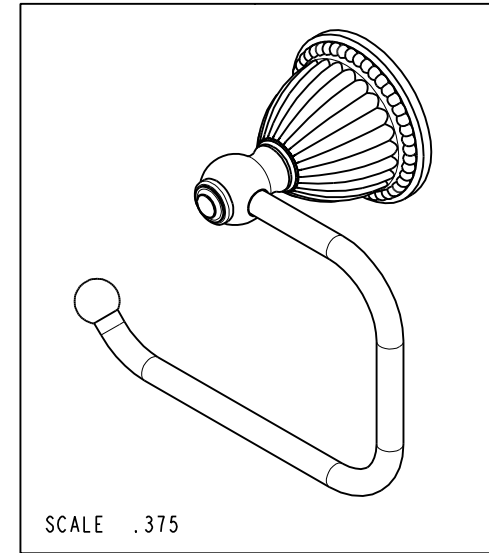
NOTES:

(NI) 1. FIT / FORM / FUNCTION SHALL FOLLOW PS-E.008.



BILL OF MATERIAL (CURRENT LEVEL)

ITEM	PT/ASSY	DESCRIPTION	TYPE	QTY.
1	1-212	ACCESSORY MTG KIT	ASSEMBLY	1
2	12172	ESCUTCHEON, 880 SERIES	PART	1
3	40235	OPEN TOWEL/TISSUE POST	PART	1
4	2-304	ROLLER ASM-TISSUE	ASSEMBLY	1
5	92107	SCRW, 8-32 X 1/4 SKT HD DOG PT SS	PART	1
6	92000	SCREW 8 - 32 X 1/8 SS	PART	1
7	1-125	HARDWARE KIT	ASSEMBLY	1
8	91751	O-RING, #2-139, 50 DURO	PART	1



ZONE	REV	DESCRIPTION	DATE	APPROVED
-	C	EN-3722	02/08/19	C.G.
-	B	EN-2509c	02/21/14	-
-	A	EN-1241a	09/14/09	-
-	-	RELEASED	08/29/03	-

COPYRIGHT 2005 BRASSTECH, INC. THESE DRAWINGS AND THE DESIGNS DEPICTED HEREIN ARE THE PROPRIETARY PROPERTY OF BRASSTECH. ANY USE OR REPRODUCTION IS SUBJECT TO THE EXPRESS APPROVAL OF BRASSTECH. UNAUTHORIZED USE IS STRICTLY PROHIBITED. ALL RIGHTS RESERVED.

TESTING	-	-	-
ASSEMBLY	-	-	-
PLATING	-	-	-
POLISHING	-	NEXT ASSY	USED ON
MACHINING	-	APPLICATION	
TOOLING FIXTURE #	REMOVE ALL BURRS AND SHARP EDGES		

UNITS ARE: INCHES [MM]
TOLERANCES ARE:
FRACTIONS DECIMALS ANGLES
±1/16" .X ±.1 [2,5] ±1°
.XX ±.06 [1,5]

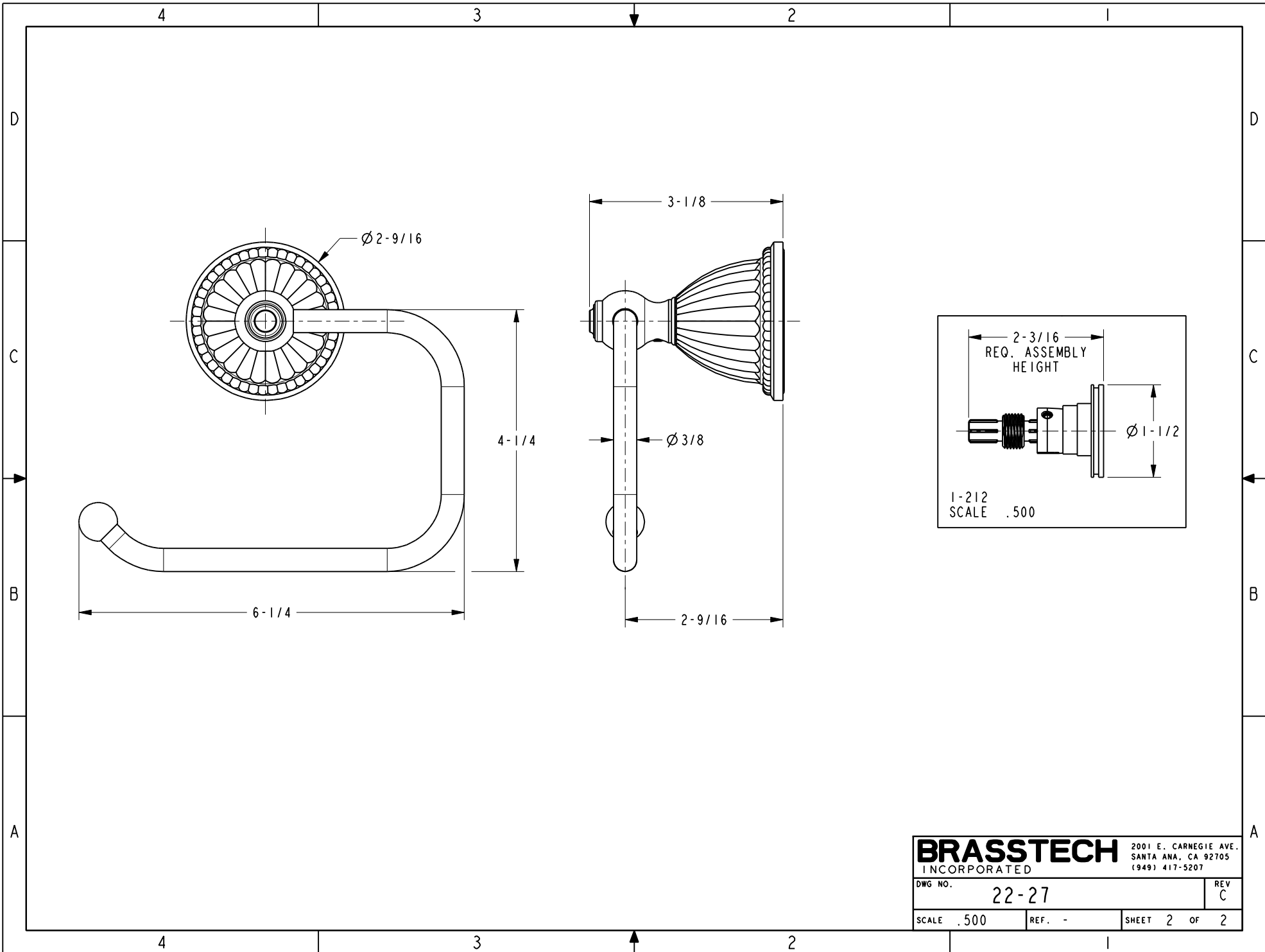
(X.XXX) DENOTES CRITICAL DIMS.
ALL THREADS ARE CRITICAL

DRAWN	MANJUNATH	02/08/19
CHECKED	C.G.	02/08/19
APPROVED	C.G.	02/08/19

BRASSTECH 2001 CARNEGIE AVE.
INCORPORATED SANTA ANA, CA 92705
(949) 417-5207

OPEN TOWEL/TISSUE HOLDER BI

DWG NO.	22-27	REV	C
SCALE	.500	REF.	-
SHEET	1	OF	2



BRASSTECH		2001 E. CARNEGIE AVE. SANTA ANA, CA 92705 (949) 417-5207	
INCORPORATED			
DWG NO.	22-27		REV C
SCALE .500	REF. -	SHEET 2 OF 2	